



Spikeflow software overview

Introduction

Spikeflow is a tool for developing web-based form flows in a speedy, elegant and maintainable fashion.

The basic Spikeflow package includes the following applications:

- *Spikeflow Creator*: is a stand-alone application to graphically build web-forms containing various types of data input and output fields. It can also link forms based on complex conditions, thereby creating information flows.
- *Spikeflow Runtime*: is a web application to “play” the web-flow on a web server of your choice.

These products allow you to create, deploy, fill and submit forms and integrate these forms with back-end processes. A flow would contain a series of interlinked form pages.

Why use Spikeflow

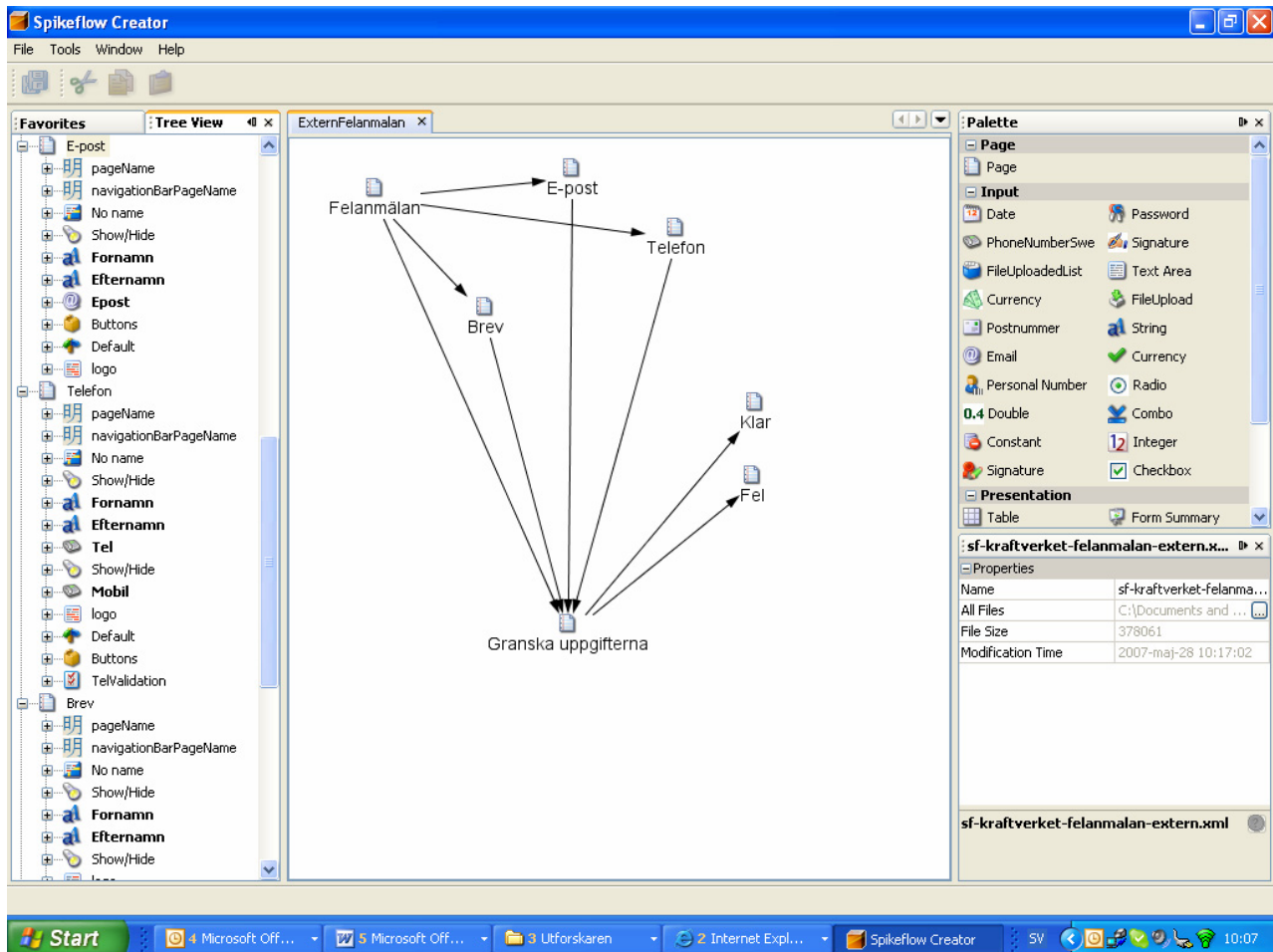
Most governmental organizations and large private sector companies across the world still use paper based forms as a mode of information capture from the general public or their customers. This information usually serves as a stepping stone to transact the core business of such organizations.

However, paper based forms and improperly designed web based forms often suffer from a few fundamental drawbacks:

- Forms are too generalized and contain placeholders for information that is not required from a particular user. People can get confused with questions that are not applicable to them. Both paper forms and poorly designed web forms suffer from this drawback.
- Forms don't provide instant and specific feedback to the information entered and are hence prone to erroneous input. Forms can go “back and forth” many times between the organization and the user. This will in turn lead to wastage of both time and materials (in the case of paper forms).
- Paper forms and some web forms generally have a crowded appearance and a poor layout design, making them hard to understand at a glance, and contributing to a longer completion time.
- Integration with ERP systems, web services or other enterprise software is manual with paper forms and some web form submissions.
- At the point of submission, the user is not presented with a printable summary of the information relevant to his or her specific case. This is true for most web forms.
- Complex paper forms contribute to the bureaucratic image of the organization concerned.
- Paper forms are wasteful and damage the environment.



All these drawbacks add up to a poor customer experience. These disadvantages could be completely overcome by enabling users to interact with properly designed *online information flows* instead of paper based forms or poorly designed web pages. The product vision of Spikeflow is to develop a tool that would allow web administrators with little development experience to create such efficient online information flows in double-quick time.



Screen View of the Creator: In the center the Flow Diagram shows the flow of the forms, the Tree Structure on the left details the same. The properties window on the right giving the property of the item selected.

About the key features in Spikeflow

Spikeflow is an information process simplifier tool, which simplifies the information collection process by creating intelligent and effective information flows without programming.

Following are some key features of this product, which enables you to achieve the above objective:

- **Graphical building of flows:** You can drag and drop form data elements such as input elements and output elements to graphically build a flow. It also provides a graphical representation of your flow through a flow diagram.
- **Multi page forms with intelligent transitions:** You can link forms into flows by specifying complex flow-conditions that would decide which page to go next, based on the user input.



- **Complex Validations:** Field level validations and page level validations across multiple fields can be accomplished through simplified Valang Scripting.
- **Formatting:** Default templates for flows are provided in Spikeflow Creator. Furthermore, you can integrate your own CSS templates.
- **Navigation Aids:** You can add, a Navigation Bar (indicates a list of previously visited pages) or a Progress bar (indicates the approximate progress within the web flow on any given form during runtime) into the flow.
- **Support for Internationalization:** Support for multiple languages for all form elements.
- **Form Summary:** You have the option to add a Form Summary Element to the flow, which would provide the end user, with a summary of data entered, at the end of the flow.
- **Generate PDFs:** You can generate PDFs, from user input data.
- **Integration with other Applications:** You can also add integration components to the flow, which can email the results to you, save results in a database, or maybe call a web service in your work flow system.
- **Sign data with digital certificates:** Support the use of Digital Signature with e.g. Nexus Multi-ID Server.
- **Compatibility package with IBM Lotus products:** Spikeflow have been tested and is compatibility verified with the IBM products, such as Websphere, DB2 & Lotus Domino/Notes.

Please contact us for further information!

Ronald Cedervaldh CEO
nSpike AB
e-mail: roce@nspike.se

Kungsgatan 37 plan 2
111 56 Stockholm
Sweden

Phone: +46-8-22 23 80
Mobile: +46-708-90 33 61
Fax: +46-8-551 107 71
INTERNET: <http://www.nspike.se>